



## PREDATOR HD THERMAL





## Product Brochure

# PREDATOR HD THERMAL



DESIGNED AND  
MANUFACTURED  
IN THE UK



ONVIF

Full HD  
1080

FULL 1080P HIGH  
DEFINITION VIDEO



## High Speed High Definition Ruggedised Pan, Tilt and Zoom Camera

### UK Manufacture

Designed and Manufactured in the UK.

### Paint Colour Options

Any colour, any quantity.

### Attack Detect Feature

Predators will automatically return to their original position if physically moved/attacked.

### Protocols

ONVIF 'S' compliant or 360SDK, see our web site for the many compatible VMS systems.

### Intelligent Lighting control

Illumination automatically adjusts the lighting intensity to ensure the highest quality images under variable lighting conditions.

### Illumination

Full range of Dual IR & White Light options. Up to 60 metres of IR lighting and up to 50 metres of white light giving 'COLOUR VIDEO at NIGHT'. Sirius illumination combines narrow, medium and wide angle lenses to give a wide range of light spread (from 9° to 45°). Choice of standard IR 850nm or covert 940nm available.

### IP68 Certification

IP68 certified for the harshest environments.

### 360 Enhanced Low Light cameras

360 Enhanced low light cameras with mono video images as low as 0.0008 lux (no illumination)

### Built in EDGE recording option - 128 or 256Gb Storage on board

Continuous/FTP Upload/Network Loss/Alarm Scheduled recording option to On Board Storage. HD Stream only.

### Privacy Zones

24 privacy zones are available with simple joystick positioning and sizing.

### Maritime Paint

10 year maritime paint option.

### Warranty

3 year warranty



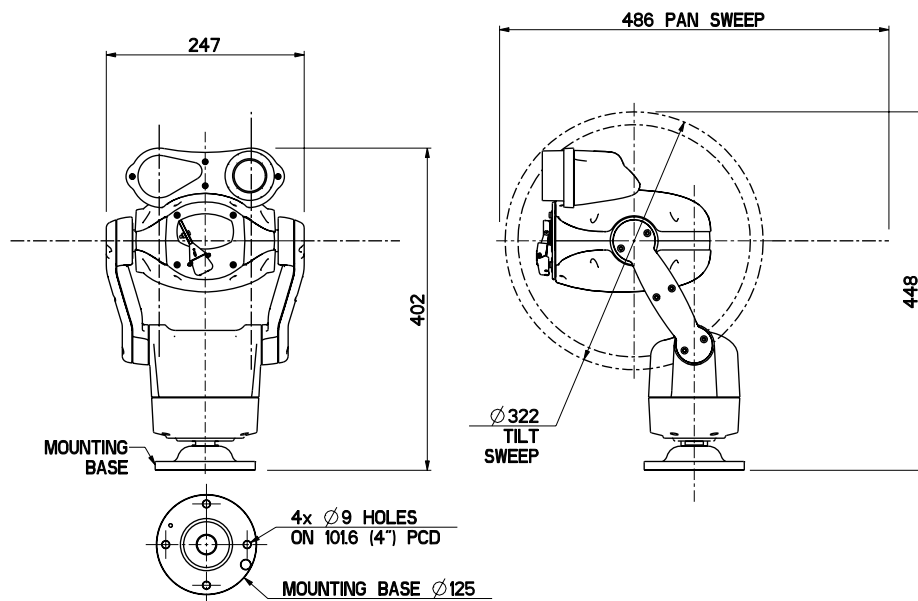


## Product Brochure

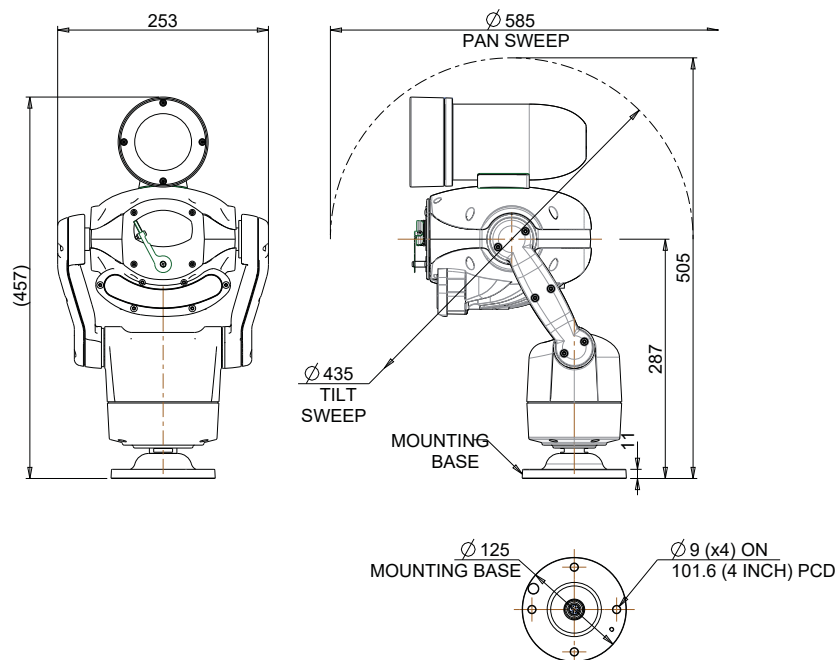
## PREDATOR HD THERMAL



Predator  
9-35mm Thermal lens  
Weight: 9kg

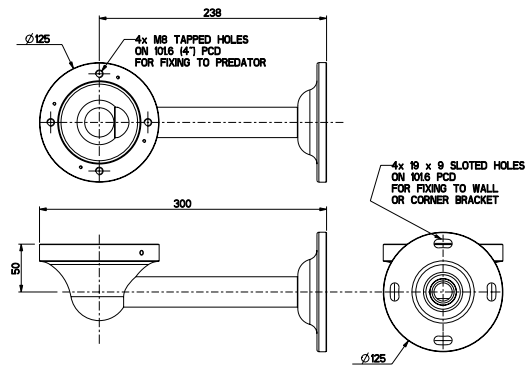


Predator  
50-100mm Thermal lens  
Weight: 9.5kg

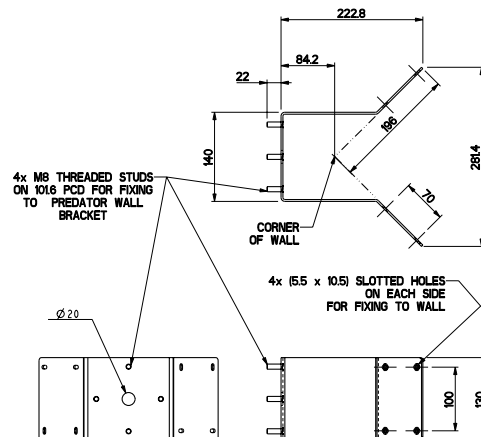


# PREDATOR HD Bracketry

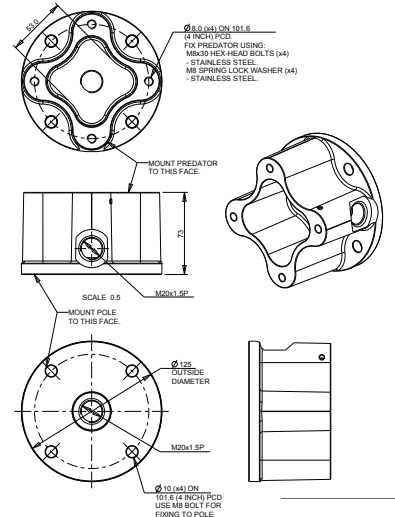
Wall Bracket  
Weight: 1.2kg



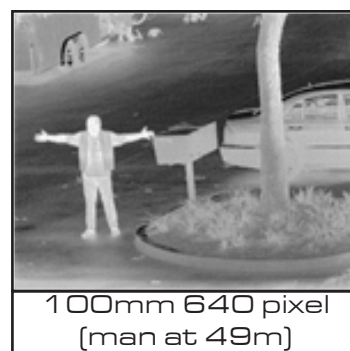
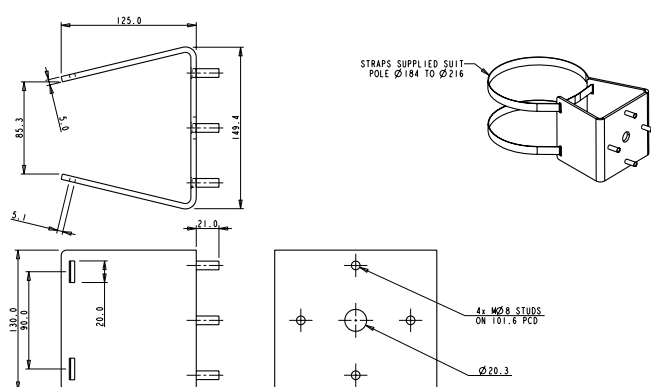
Corner Bracket  
Weight: 2.2kg



Pole Mount Adapter (PMA)  
Weight: 1 kg



Pole Mount Bracket (PMB)  
Weight: 2.5kg





PRODUCT SPECIFICATION	30x HD			20x HD			30x HD ENHANCED LOW LIGHT		
Colour/Mono	Yes			Yes			Yes		
Imager (CMOS)	1/2.8-type Exmor			1/2.8-type Exmor R			1/2.8-type Exmor R		
Zoom - Optical + Digital	30x, 12x			20x, 12x			30x, 12x		
Zoom - Total	360x			240x			360x		
Pixels	Approx 2.38 Megapixels			Approx 2.14 Meagpixels			Approx 2.13 Megapixels		
Horizontal view angle	2.3°[T] - 63.7°[W]			3.3°[T] - 59.5°[W]			2.3°[T] - 63.7°[W]		
Lens Size	4.3 - 129mm			4.7 - 94mm			4.3 - 129mm		
Min Sensitivity - colour	0.1 Lux			0.1 Lux			0.0013 Lux		
Min Sensitivity - mono Int	0.013 Lux			0.008 Lux			0.0008 Lux		
Signal Noise Ratio	>50dB			>50dB			>50dB		
Picture Flip	Yes			Yes			Yes		
Picture Freeze	Yes			Yes			Yes		
PRODUCT FEATURES	ALL PREDATOR units have the following functions								
Focus/Iris	Auto/Manual								
Presets	360								
Tours	4 (max 90 presets per tour)								
Learned Patrols	4 mimic tours - up to 30 minutes duration each								
Privacy Zones	Up to 24								
Variable pan speed/coverage	0.1 - 120°/sec, 360° continuous rotation, absolute positioning								
Variable tilt speed/coverage	0.1 - 120°/sec, 180°, absolute positioning								
Auto Homing	Goes to preset, tour or mimic tour after prescribed time								
Col/Mono Changeover	4 levels - 3 fixed, 1 custom/user defined								
Operating temperature	-50°C to +60°C with optional heater								
Power	24vac/30vdc								
Mounting options	Wall, Corner, Pole and Soffit								
Certification	CE & FCC approval; Ingress IP68; Impact IK10; Vibration & Shock certified approvals								
THERMAL CAMERA RANGE									
Thermal Imager	Uncooled VOx Microbolometer								
FPA/Digital Video Display	336 x 256					640 x 512			
Spectral Band	7.5 - 13.5								
Exportable Frame Rates	8.3Hz [PAL]								
Sensitivity [NETD]	<50mK at f/1.0								
Digital Detail Enhancement	YES								
Pixel Pitch	17µm								
THERMAL CAMERA RANGE	9mm	13mm	19mm	25mm	35mm	50mm	60mm	100mm	
336	35°	25°	17°	13°	9.3°	6.5°	5.5°	3.3°	
640	69°	45°	32°	25°	18°	12.4°	10.4°	6.2°	
CODEC	25fps			ASPECT			30fps		
HD1080p	1920x1080			16:9			1920x1080		
HD720p	1280x720			16:9			1280x720		
D1	720x576			4:3			720x480		
VGA	640x480			4:3			640x480		
QVGA	432x240			16:9			432x240		
Distribution	Multi Codec 2 streams								
Image Compression	H.264, MPEG4, MJPEG								
Protocols	ONVIF (S), TCP/IP, HTTP, RTP, RTSP, 360SDK								
Compression levels	CBR, VBR CVBR								
SIRIUS ILLUMINATION	IR & WHITE LIGHT (Nominal)				Standard Paint Options			RAL	
SIR60	IR 60 metres				Black			9005	
SIR50WL	IR 50 metres, WL 50 metres				White			9003	
WEIGHTS					Cool Grey			7035	
Predator TC	9kg				Mid Grey			7001	
Predator Long Range TC	9.5kg (with LED Array)								



### 360 Vision Technology Ltd

Unit 7 Seymour Court Manor Park Runcorn Cheshire WA7 1SY UK  
Tel: +44 (0)870 903 3601 Fax: +44 (0)870 903 3602  
info@360visiontechnology.com  
www.360visiontechnology.com





**360VISION**  
TECHNOLOGY