



Quick Start Guide Invictus & Predator 'Coastal' installations.

This is meant as a quick installation guide to help the installation process, for more information **please read the manual which can be found by scanning the above QR code**

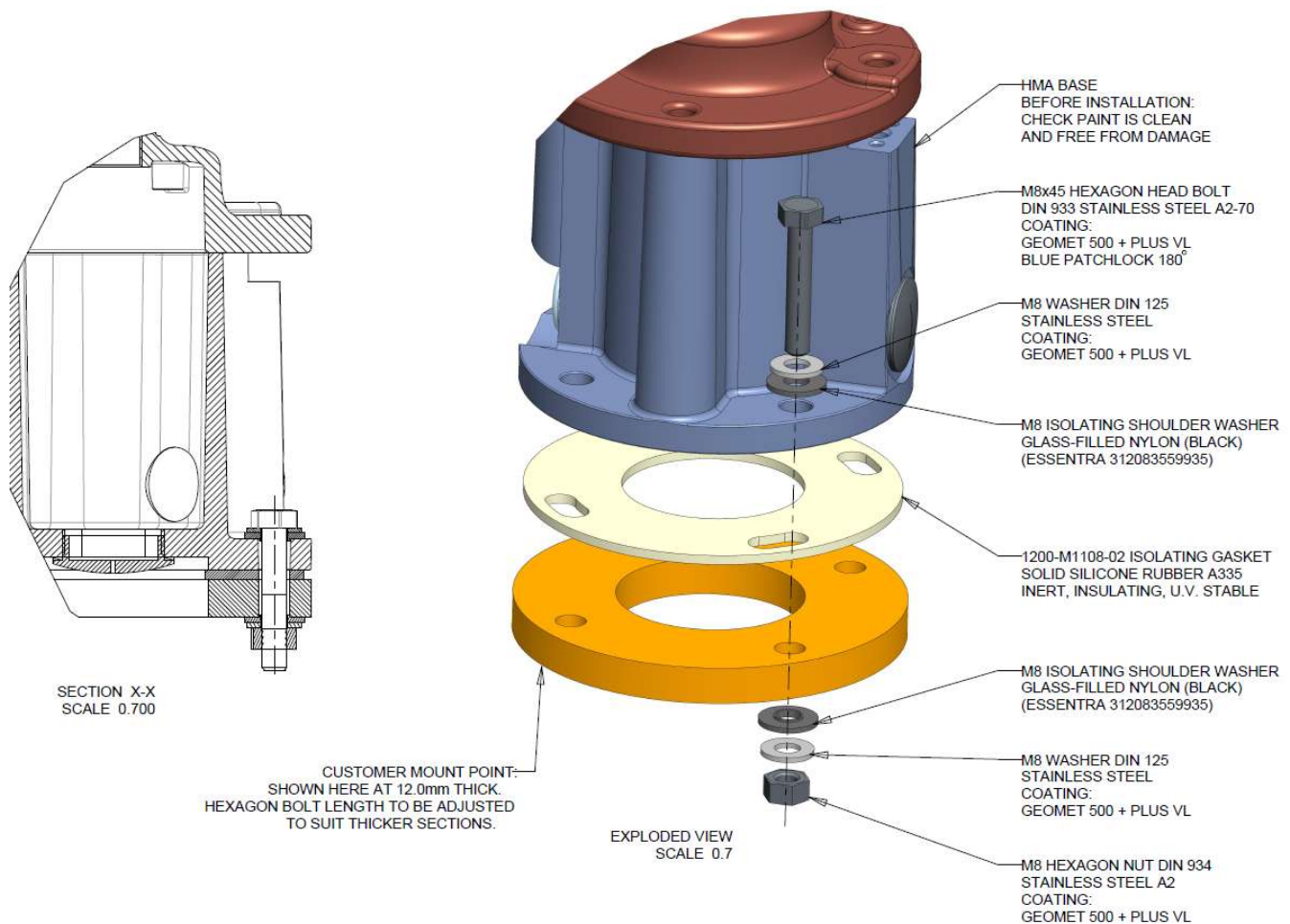
Please contact Technical Support for any Product issues or Troubleshooting during or after installation:
email: techsupport@360visiontechnology.com or phone: **01928 246014**

For anything else please contact sales: salesadmin@360visiontechnology.com or phone: **01928 570000**

Mechanical interface: Camera assembly installation; minimum requirements:

- Where 360-Vision Technology camera units are installed at or near coastal areas
- Where 360-Vision Technology camera units are installed on, or in contact with unprotected structures (exposed stainless steel) or similar where galvanic corrosion is a concern.

The following minimum requirements shall be followed:



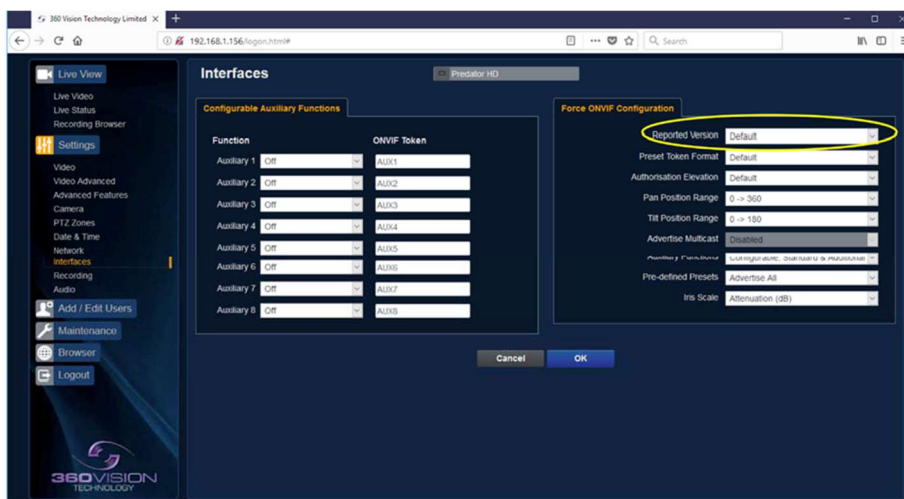
The above illustration shows a HMA version of camera mount, the same principle applies with PMA and direct mount versions.

Failure to adhere to the above fixing specifications will invalidate the extended Paint Warranty

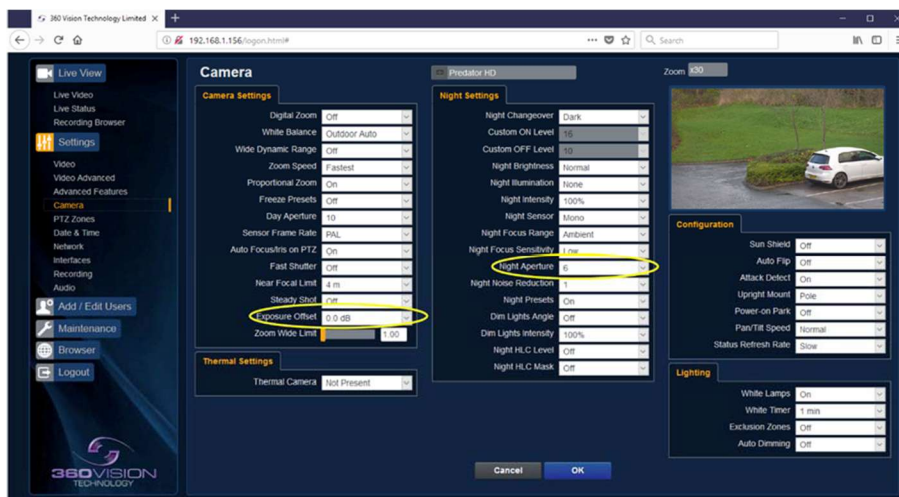
- Default IP for all products – 192.168.1.187 – Username **admin** and Password **9999**
- Discovery and Configuration dedicated Stand Alone Apps are available by scanning this QR Code



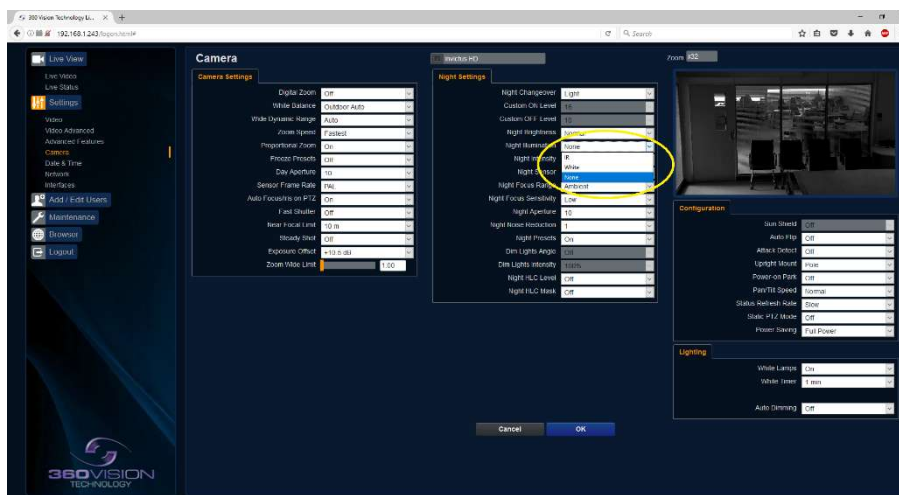
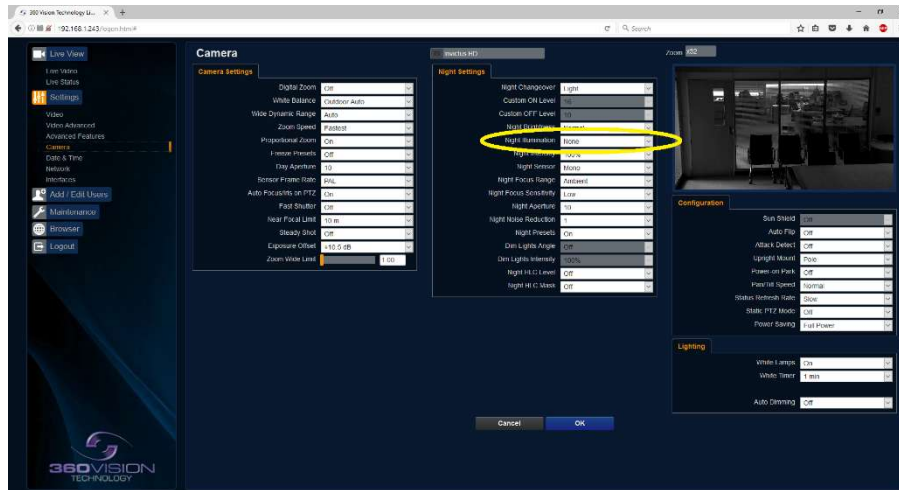
- Browser Connection possible via Safari, Firefox, MS Edge and IE – 1 second video update is standard via browsers – For real time video on setup, please use dedicated stand-alone apps
- **If using Avigilon ACC4 or ACC5, please set ONVIF version to '2.02' BEFORE scanning for ONVIF cameras**



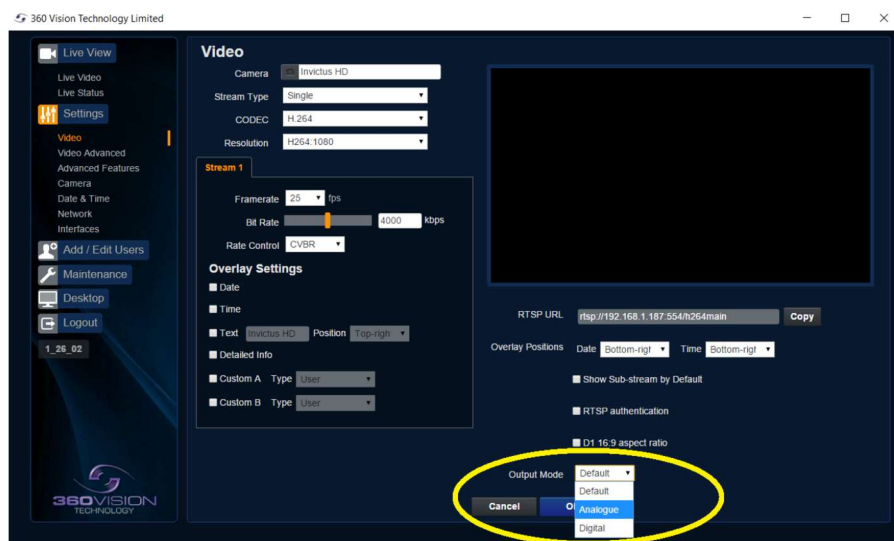
- Default **INVICTUS** settings set to 'enhanced low light' with **Aperture** set to **10** and **Exposure Offset** set to **+10dB**
- If images are too bright (in well-lit scenes) reduce the **Exposure Offset** to suit



- Please Note Default **'Night Illumination'** is set to **'None'** if you require the IR Lamps to come on when the camera switches to mono this setting will need to be changed to **'IR'**



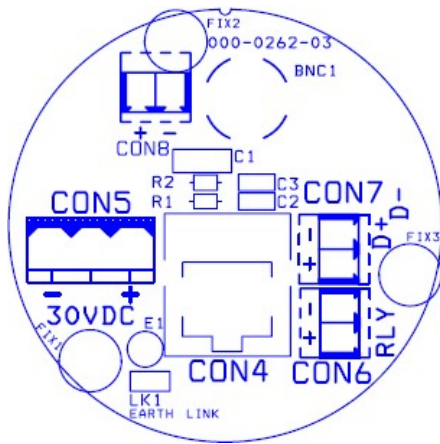
- **All HYBRID version cameras are set by default to 'Digital' Output Mode.** This provides both HD/IP Video streaming and Analogue Video Output (plus IP ONVIF/SDK control and RS-485 twisted pair telemetry control options).
- To enable PAL Analogue Video Output (50 images per second) set the **Output Mode** to **'Analogue'**. This setting is on the Video page. **The HD/IP Video Streaming is disabled in Analogue mode.**



Wiring for HMA (Hinged Mount Adaptor) and Hybrid 12 pin

Installation for Hinge Mount

- Fit the seal supplied to the Hinge mount
- Remove the three locking bolts and open the hinged mount. Ensure the safety lanyard is attached and carefully allow the camera to rest on this.
- Run the cable through a M20 gland (supplied) into the camera using either the side or underneath entry hole, fit the supplied blanking plug into the unused hole.
- Close the hinge and re-fit the 3 locking bolts securely so the gasket compresses.
- Tighten the gland, Silicone maybe required to ensure a water tight seal around the cables, do not use an adhesive or silicone between the seal and the surface that the hinged mount is attached.
- Please make sure there is adequate spare cable (20cm) for when the camera is resting on the lanyard, failure to do this could damage the connector circuit board.



Predator / Invictus Hinged Mount Adapter PCB Connections

- BNC 1 - Thermal/Analogue output
- CON 4 – Ethernet Port
- CON 5 – Power Connection
- CON 6 - Washer Connection
- CON 7 – RS485 Connection

Predator Hybrid camera PSU shown PREDHYB-PSU-SM

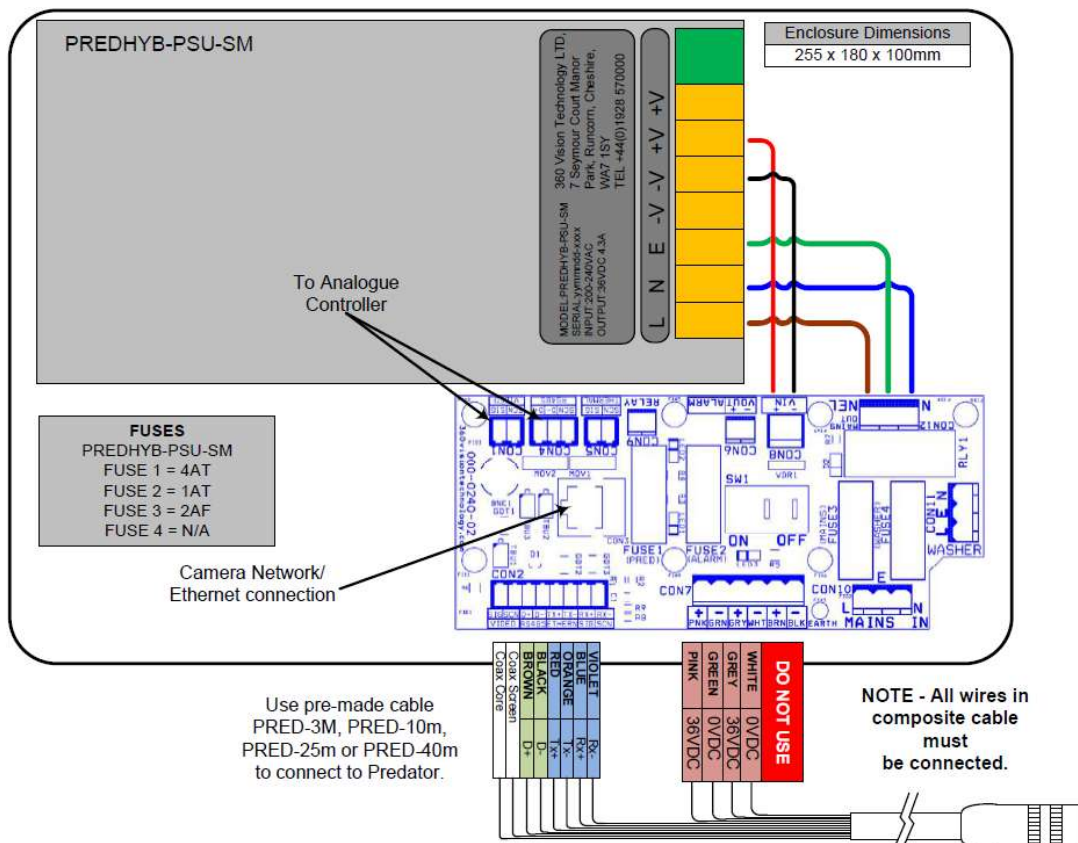


Photo-Biological Safety

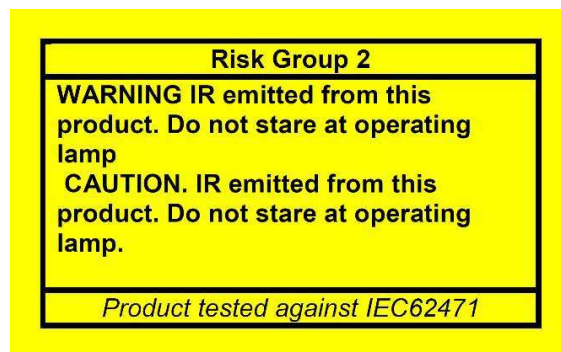
Lighting options

- SIR110, SIR140WL, SIR160, 250WL
- The lighting options listed above fulfill the requirements for photo-biological safety according to IEC/EN 62471 (Risk Group 1)
- Avoid prolonged eye exposure, do not stare at operating lamp.



Lighting options

- SIR200, SIR275, SIR250WL, SIR400, SIR550S, 400SWL, SIR100W200N
- The lighting options listed above fulfil the requirements for photo-biological safety according to IEC/EN 62471 (Risk Group 2).
- Avoid prolonged eye exposure, do not stare at operating lamp.



Storage

- Failure to adhere to storage conditions or leaving the product without power for extended periods in external conditions will result in condensation within the illumination housing. This is due to trapped air contained within the IP6x sealed unit which naturally dissipates once powered from an approved 360VTL Power Supply Unit (PSU).

