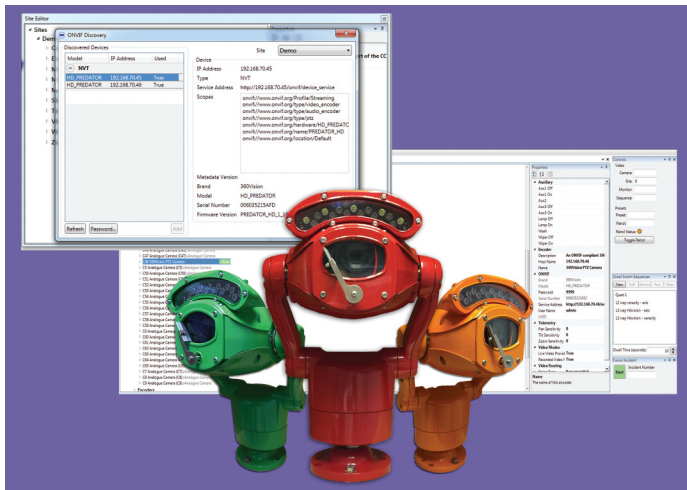




Case Study: System Solutions



Promoting the company's ethos of establishing close technical working partnerships, CCTV design and manufacturing company 360 Vision Technology, in conjunction with systems control company Meyertech, have developed fast & easy set-up, and deep control for 360 Vision's range of ONVIF compliant cameras.

Right from the outset, the manufacturers' technical relationship has spearheaded an objective to develop product offerings from both companies that will easily and seamlessly integrate when installed within any application, utilising the ONVIF protocol. Thanks to the ongoing technical partnership between the two UK-based technology manufacturers, simple product set-up, deep systems integration and performance benefits are built into many applications and sizes of CCTV installations across the globe.

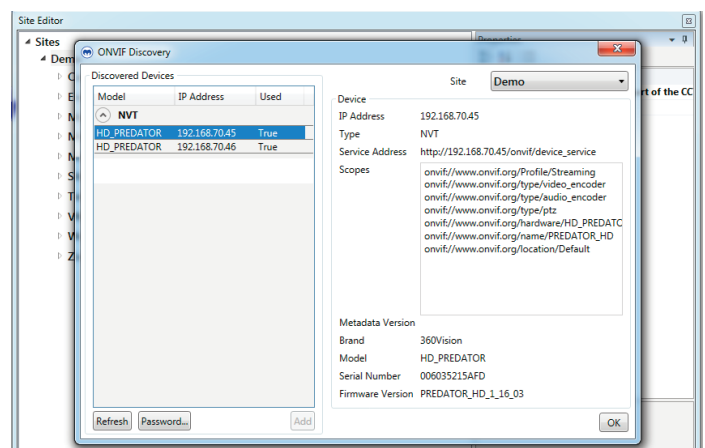
However, the manufacturers' long-term technical partnership extends much further than just a shared protocol, as Mark Rees, Business Development Director at 360 Vision explains: ***"Right from the design stage of any new product, our respective R&D teams interact to ensure the camera equipment we introduce to market is as best performing, and simple to set-up and use it possibly can be."***

For installations using the enterprise-class FUSION-Eclipse Video Management Software (VMS), through to the simple (4-camera) Nano VMS, the deployment of 360 Vision ONVIF compliant cameras offers simple 2-click integration into any Meyertech control solution.

David Wood, CRM and Business Development Executive for Meyertech explains: ***"Users of our FUSION-Eclipse VMS software simply select the 'Discovery' tool and then add the desired 360 Vision camera from the list of devices available in a drop down menu, the camera is then ready for use in the system – in just a couple of clicks! Further to that, the usual IP camera options such as frame rate and video resolution are easily configured in an intuitive sub menu, and features such as IR and white lights, wipers, and pre-set tours on 360 Vision's Predator cameras can be selected directly."***

In this way, any 360 Vision camera can be integrated into a Meyertech controlled CCTV system in minutes. The partnership continues to ensure that 360 Vision cameras are as simple as possible to integrate into existing systems or add to new installations – minimising installation time and maximising system performance.

Mark Rees concludes: ***"As an acknowledged industry leader, 360 Vision is always looking to partner with like-minded CCTV systems integration manufacturers. With our long term***



technical relationship with Meyertech, we are not only ensuring installers and end-users can enjoy a fully integrated, hassle-free systems control experience, but to the wider world market, promote the benefits to be gained by specifying 'Best of British' integrated surveillance solutions."



Predator all-in-one PTZ camera