



PREDATOR RADAR





PREDATOR RADAR



FULL 1080P HIGH
DEFINITION VIDEO

Introducing the Predator Radar

Predator Radar

Unique Integrated Radar & Predator 1080p HD Camera

Cost Effective Perimeter/Wide Area Surveillance
Upto 300m Radius/400m Diameter Constant Surveillance.

Predator Radar is designed for applications where wide area detection and tracking of moving objects is required.

Predator Radar does not need visual clarity and therefore works in all weather conditions - rain, fog, snow, mist, coastal as well as extreme hot and cold climates.

Predator Radar scans 360° twice every second to detect and automatically track upto 40 simultaneous objects.

Multiple objects can be tracked using sophisticated and intelligent "Time Share" alarm handling - ensuring ALL alarms are evenly or priority handled.

Alarms are overlaid On Screen to notify the operator that a target is being tracked, even when the camera is looking elsewhere.

Incorporating software features such as controlling Predator Intelligent Illumination to give White Light "spotlight" tracking for Human activation or Infra Red for vehicle activation.



Airport and Runway
Surveillance



Traffic safety on bridges



Datacentres



Private Property and
Estates



Motorways



Nuclear Power Stations



Oil and Gas



Ports



Power Stations



Prison Security



Railways



Reservoirs



PREDATOR RADAR



FULL 1080P HIGH
DEFINITION VIDEO



High Speed High Definition Ruggedised RADAR Controlled Pan, Tilt and Zoom Camera

UK Manufacture

Designed and Manufactured in the UK.

Paint Colour Options

Any colour, any quantity.

Attack Detect Feature

Predators will automatically return to their original position if physically moved/attacked.

Protocols

ONVIF 'S' compliant or 360SDK, see our web site for the many compatible VMS systems.

Intelligent Lighting control

Illumination automatically adjusts the lighting intensity to ensure the highest quality images under variable lighting conditions.

Illumination

Full range of 'Patent Pending' Dual IR & White Light options. Up to 160 metres of IR lighting and up to 140 metres of white light giving 'COLOUR VIDEO at NIGHT'. Sirius illumination combines narrow, medium and wide angle lenses to give a wide range of light spread (from 9° to 50°). Choice of standard IR 850nm or covert 940nm available.

IP68 Certification

IP68 certified for the harshest environments.

360 Enhanced Low Light cameras

360 Enhanced low light cameras with mono video images as low as 0.0008 lux (no illumination)

Built in EDGE recording option - 128 or 256Gb Storage on board Continuous/FTP Upload/Network Loss/Alarm Scheduled recording option to On Board Storage.

Privacy Zones

24 privacy zones are available with simple joystick positioning and sizing.

Maritime Paint

10 year maritime paint option.

Warranty

3 year warranty





Product Brochure

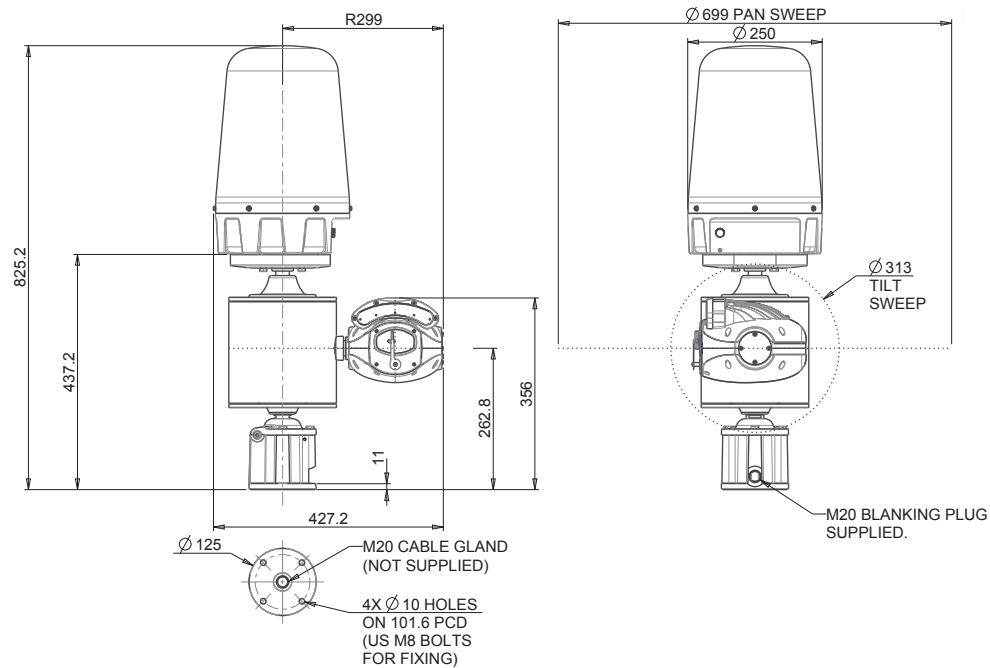
PREDATOR RADAR



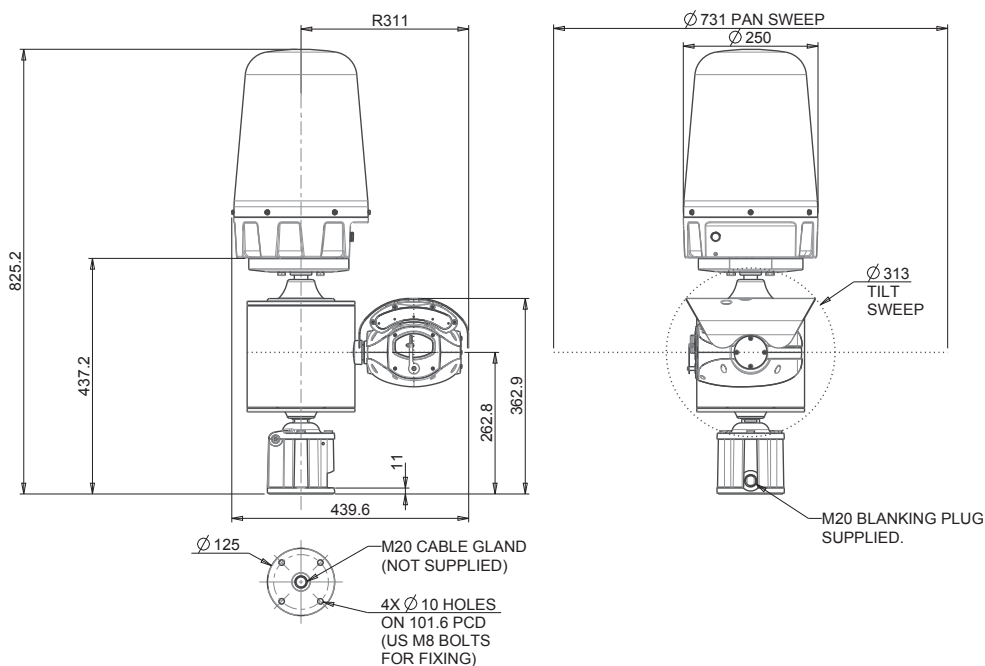
DESIGNED AND
MANUFACTURED
IN THE UK



Predator Radar with High Intensity LED array



Predator Radar with High Intensity LED array & sunshield



PRODUCT SPECIFICATION	30x HD ENHANCED LOW LIGHT				
Colour/Mono	Yes				
Imager (CMOS)	1/2.8-type Exmor R				
Zoom - Optical + Digital	30x, 12x				
Zoom - Total	360x				
Pixels	Approx 2.13 Megapixels				
Horizontal view angle	2.3°[T] - 63.7°[W]				
Lens Size	4.3 - 129mm				
Min Sensitivity - colour	0.0013 Lux				
Min Sensitivity - mono Int	0.0008 Lux				
Signal Noise Ratio	>50dB				
Picture Freeze	Yes				
Picture Flip	Yes				
PRODUCT FEATURES	ALL PREDATOR units have the following functions				
Focus/Iris	Auto/Manual				
Presets	360				
Tours	4 (max 90 presets per tour)				
Learned Patrols	4 mimic tours - up to 30 minutes duration each				
Privacy Zones	Up to 24				
Variable pan speed/coverage	0.1 - 120°/sec, 360° continuous rotation, absolute positioning				
Variable tilt speed/coverage	0.1 - 120°/sec, 180°, absolute positioning				
Auto Homing	Goes to preset, tour or mimic tour after prescribed time				
Col/Mono Changeover	4 levels - 3 fixed, 1 custom/user defined				
Operating temperature	-50°C to +60°C with optional heater				
Power	24vdc/30vdc				
Mounting options	Wall, Corner, Pole and Soffit				
Certification	CE & FCC approval; Ingress IP68; Impact IK10; Vibration & Shock certified approvals				
SIRIUS ILLUMINATION	IR & WHITE LIGHT		RADAR FEATURES		
IR75	IR 75 metres		Maximum Range	200m Man/Vehicle Radius	
IR125	IR 125 metres		Range Resolution	25cm	
IR100WL	IR 100 metres, WL 100 metres		Beamwidth - Azimuth	2°	
CODEC	25fps	ASPECT	30fps	Beamwidth - Elevation	Spread Beam
HD1080p	1920x1080	16:9	1920x1080	Measurement Rate	800 per second
HD720p	1280x720	16:9	1280x720	Field of View	360°
D1	720x576	4:3	720x480	Scan Rotation Rate	2 RPS
VGA	640x480	4:3	640x480	Interface	100Mb Ethernet
QVGA	432x240	16:9	432x240	Mounting Height	4 - 5 metres
Distribution	Multi Codec 2 streams			Environmental	IP67 BS EN 60068-2-52
Image Compression	H.264, MPEG4, MJPEG			Operating Frequency	76 - 77 GHz
Protocols	ONVIF (S), TCP/IP, HTTP, RTP, RTSP, 360SDK			Operating Temp	-20°C to +60°C
Compression levels	CBR, VBR CVBR			Compliance	CE Marked EN 30109-2V1.3.2 EN 301489-3V1.4.1 EN 301489 V1.9.2 IEC 60950-1 IEC 60950-22

All trademarks are used courtesy of registered owners. PREDATOR RADAR is a registered trademark of 360 Vision Technology Ltd.
The manufacturer reserves the right to change specifications without notice.



360 Vision Technology Ltd

Unit 7 Seymour Court Manor Park Runcorn Cheshire WA7 1SY UK
Tel: +44 (0)870 903 3601 Fax: +44 (0)870 903 3602
info@360visiontechnology.com
www.360visiontechnology.com





360VISION
TECHNOLOGY