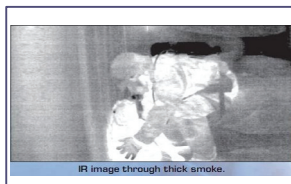
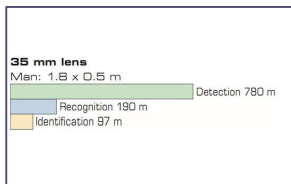


Thermal Predator



...Rugged with *STYLE*



640 Pixel Thermal Core Now available

External fully functional THERMAL CCTV PREDATOR cameras

- Multi Protocol integration** ▶ The PREDATOR range comes with multi-protocols as standard allowing complete integration with many leading DVR's, Matrices and IP systems. Protocols built in include 'Twisted Pair' control from 360 Vision, Forward Vision, Pelco P/D, Honeywell, with 'In-Coax' control from 360 Vision, BBV FSK, and Pelco Coaxitron.
- Thermal inside** ▶ Thermal technology inside with lens options up to 35mm for Thermal applications.
- OSD** ▶ PREDATOR's OSD enables full access to all functions using either 3rd party protocols or 360 Vision control systems.
- Build Quality** ▶ Excellence in Design and Manufacture ensure all 360 Vision products offer exceptional quality combined with ultra reliability.
- Motor Motion design** ▶ The PREDATOR, like 360 Vision's extensive VisionDome range, is driven by 360 Vision's highly advanced motor control system, enabling extremely quiet, controllable and smooth with totally accurate operation and exact preset position selection.
- Economics** ▶ The PREDATOR uses only the highest quality components, combined with Innovative design to support full remote diagnostics and reduce installation, operation and maintenance costs.
- Intelligent alarms** ▶ The intelligent alarm module allows up to 144 alarm inputs which can be remotely configured via the Vision Matrix or any compatible 3rd party system.
- Creative Privacy Zones** ▶ 32 privacy zones are available with simple joystick positioning and sizing.
- Low light capability** ▶ Frame integration camera options give usable video images as as low as 0.01 lux.
- Colour/Mono cameras** ▶ The PREDATOR range includes 18x, 28x, and 36x zoom with Autofocus featuring ExView camera technology which gives excellent low light performance. 360 Vision software enables the colour/mono switch over levels to be specific lighting conditions.
- Picture Freeze** ▶ The on-screen visible image can be frozen whilst the PREDATOR moves to preset positions allowing efficient DVR recording.
- Fast Shutter option** ▶ For optimum performance with automatic number plate recognition systems.
- Wide range of options** ▶ PREDATOR standard colours are Black, Cool Grey or White with Custom colours by request. The PREDATOR range includes: Pre-made cables of 3, 10, 25 and 40m, Wiper systems, Twin IR lamp, Wall, Corner and Post Mount brackets, Mounting adapter, PSU and Washer system.

DOMES AND PREDATORS

MATRICES AND CONTROLLERS

RECORDING AND TRANSMISSION

FLAT SCREENS AND ANCILLARIES

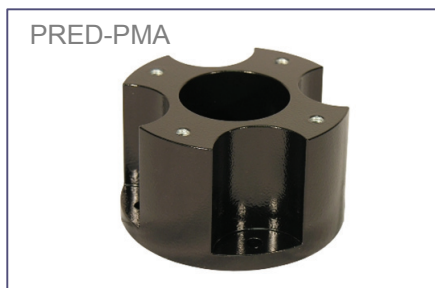
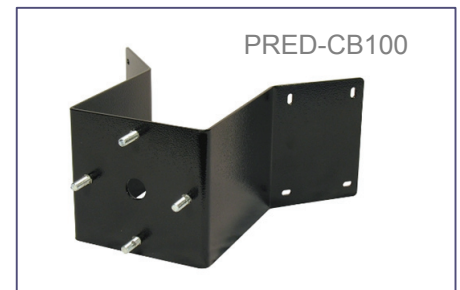
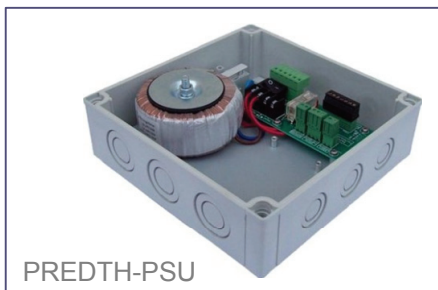
CAMERAS

PREDATOR SPEC	18x Col/Mono	28x Col/Mono	36x Col/Mono
Colour/Mono	YES		
Imager	1/4" ExView HAD	1/4" Super HAD	1/4" ExView HAD
Zoom – Optical + Digital	18x, 12x	28x, 12x	36x, 12x
Zoom - total	216x	336x	432x
Line resolution	550		540
Pixels	752(H) x 582(V)		
Horizontal view angle	2.8°(T) ~ 48°(W)	2.1°(T) ~ 55.8°(W)	2.7°(T) ~ 57.8°(W)
Lens size	4.1 ~ 73.8mm	3.5 ~ 98mm	3.4 ~ 122.4mm
ExView Technology	YES	NO	YES
Min sensitivity – colour	0.7 Lux	0.25 Lux	1.4 Lux
Min sensitivity – colour int	0.04 Lux	0.016 Lux	0.1 Lux
Min sensitivity – mono int	0.01 Lux	0.0015 Lux	0.01 Lux
Signal noise ratio	>50dB		
Picture freeze	YES		
Picture Flip	YES		
PREDATOR THERMAL	Part Code - PRTC35320 – xxBW Thermal 35mm 320 Pixel Part Code - PRTC35640 – xxBW Thermal 35mm 640 Pixel		
Video output	1V p to p, 75Ω Dual BNC (1 x Analogue, 1 x Thermal)		
Scanning	PAL or NTSC		
Focus/Iris	Auto/Manual		
Presets	360		
Tours	16 (max 90 presets per tour)		
Learned Patrols	4 mimic tours – up to 30 minutes duration each		
Remote reset	Via OSD, IP network or dial up		
Dynamic privacy zones	Up to 32, 6 present on screen simultaneously, 4 levels of opacity		
Preset titling	YES (via Vision Matrix)		
Telemetry	Coaxial or RS485		
Protocols - includes	360, Pelco P/D/Coaxitron, BBV Coax, Ultrak RS485, Forward Vision, VCL RS485/Coax		
Variable pan speed/coverage	0.1 ~ 120°/sec, 360° continuous rotation, absolute positioning		
Variable tilt speed	0.1 ~ 120°/sec, absolute positioning		
Tilt coverage	180°		
Auto homing	Goes to preset, tour or mimic tour after prescribed time		
Col/Mono changeover	4 levels ~ 3 fixed, 1 custom/user defined		
Line Lock	Enable/disable		
Operating temperature	-40 ~ 60°C with optional Dual Heater		
Power	24Vac 60VA		
Recommended PSU	PREDTH-PSU		
Mounting options	Wall, Corner, Pole, Soffit		
Operational enhancements	Telemetry and power with opto isolation		
Certification	Safety Mark : CE approval; Ingress : IP67		

360PRED120511v4

All trademarks are used courtesy of registered owners. PREDATOR is a registered trademark of 360 Vision Technology Ltd. The manufacturer reserves the right to change specifications without notice.

360 Vision Predator units are covered by a 3 year warranty (excluding Wiper, Thermal camera unit has a 15 month warranty) valid from delivery date. Warranty cover is based on return to 360 Vision UK Factory with a pre-issued RMA number.



Designed and Manufacturing
in the United Kingdom

Tel: +44 (0) 870 903 360 1, Fax: +44 (0) 870 903 360 2, info@360visiontechnology.com

360 Vision technology Ltd, Unit 7 Seymour Court, Manor Park, Runcorn, Cheshire, WA7 1SY, UK